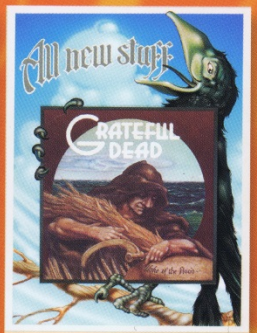
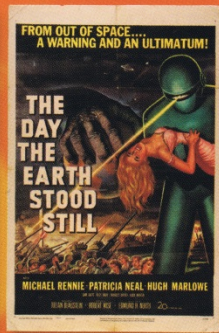
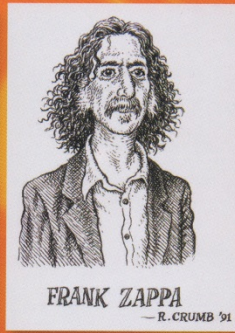
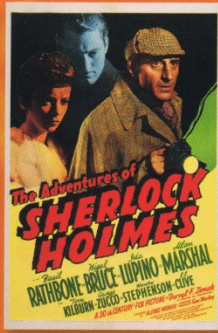
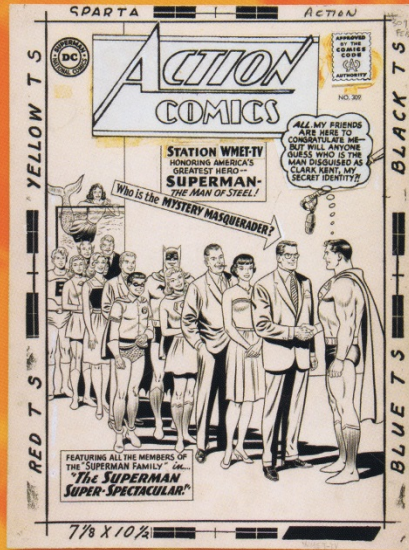


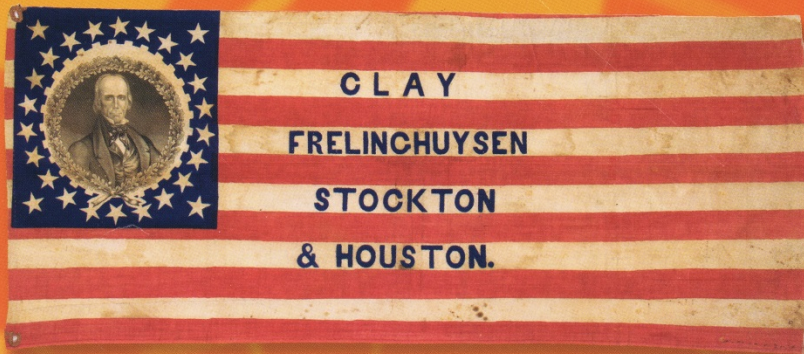
HAKE'S AMERICANA AND COLLECTIBLES CATALOGUE #210 NOVEMBER 2013



# HAKE'S AMERICANA AUCTION #210



## AUCTION CLOSING NOVEMBER 19-21



CLAY  
FRELINCHUSEN  
STOCKTON  
& HOUSTON.







2677

2678

2679

2680

2681

**2677. "TEENAGE MUTANT NINJA TURTLES" CARDED ORIGINAL SERIES ACTION FIGURE LOT.** Lot of six 4.25" to 4.5" tall action figures on blister cards. This lot consists of Leonardo, Donatello, Raphael, Michaelangelo, Splinter and April O'Neal (later release w/yellow jumpsuit w/orange accents). April notwithstanding, all figures are from first series of Ninja Turtle action figures released by Playmates. ©1988 Mirage Studios. Each card has different, character-specific art and all blisters are firmly attached to cards. Each figure comes complete w/weapon/weapon pack and each Turtle has "Turtle Power Fan Club" application card within. All but April's card are original 10-Back cards. All but April's card are punched. Leonardo's blister has some denting to bottom and card has creasing/ripples along right margin. Fine/VF Michaelangelo's card has some minor denting at bottom and some small creases at upper left corner. VF Splinter's card has creasing running about 75% of left margin and is Fine/VF. Remaining cards are Exc. to NM. Figures are NM-Mint as packaged, w/a few small paint streaks to inside of blister, but this doesn't really affect figures themselves. Great assortment of one of the 1980s most popular toylines. (H) \$100.00

**2678. "TEENAGE MUTANT NINJA TURTLES" CARDED ORIGINAL SERIES ACTION FIGURE LOT.** Lot of six 4.25" to 5" tall action figures on blister cards. This lot consists of villains Shredder, Bebop, Rocksteady, Foot Soldier, Krang and Baxter Stockman. Excluding Krang and Baxter Stockman (who are from 1989 series), all figures are from first series of Ninja Turtle action figures released by Playmates. ©1988 Mirage Studios. Each card has different, character-specific art and all blisters are firmly attached to cards. Each figure comes complete w/weapon/weapon pack. All but Krang and Baxter Stockman's card are original 10-Back cards. All but Bebop's card are punched. Krang's card is partially punched and Baxter's card is half punched. Cards have just the slightest trace of handling and are Exc. to NM overall. Rocksteady's arms have some age spotting to plastic but o/w figures are NM-Mint as packaged. Great assortment of one of the 1980s most popular toylines. (H) \$100.00

**2679. "TEENAGE MUTANT NINJA TURTLES" CARDED ACTION FIGURE LOT.** Lot of five 4.5" to 5.25" tall action figures on blister cards. This lot consists of Turtles allies Genghis Frog, Ace Duck, Casey Jones, Metalhead and Usagi Yojimbo. Genghis Frog and Ace Duck are on 14-back cards, rest are on 19-back cards. By Playmates. ©1989 Mirage Studios. Each card has different, character-specific art and all blisters are firmly attached to cards. Each figure comes complete w/weapon/weapon pack. Only Casey Jones and Usagi Yojimbo's cards have been punched. Cards have just the slightest trace of handling and are Exc. to NM overall. Figures are NM-Mint as packaged. Great assortment of one of the 1980s most popular toylines. (H) \$100.00

**2680. "TEENAGE MUTANT NINJA TURTLES" CARDED ACTION FIGURE LOT.** Lot of five 4" to 5.25" tall action figures on blister cards. This lot consists of Turtles villains Leatherhead, Rat King, General Traag, Scumbug and Muckman (w/Joe Eyeball). Leatherhead, Rat King and General Traag are on 19-back cards, rest are on 28-back cards. By Playmates. ©1989-1990 Mirage Studios. Each card has different, character-specific art and all blisters are firmly attached to cards. Each figure comes complete w/weapon/weapon pack. Leatherhead, Rat King and General Traag's cards have been partially punched. General Traag's blister has denting to one corner but remains firmly attached. Cards have just the slightest trace of handling and are Exc. to NM overall. Figures are NM/Mint as packaged. (H) \$100.00

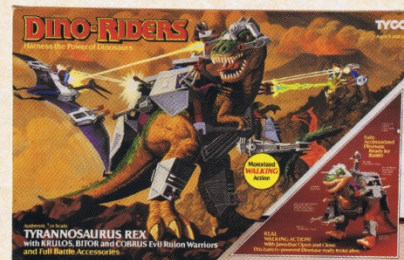
**2681. "TEENAGE MUTANT NINJA TURTLES" CARDED ACTION FIGURE LOT.** Lot of five 4.25" to 5" tall action figures on blister cards. This lot consists of Turtles allies Wingnut (w/Screwloose), Mondo Gecko, Fugitoid, Napoleon Bonafrog (w/Flyboy) and Ray-Fillet (w/Fish Stix). By Playmates. All are ©1990 Mirage Studios. Wingnut is on a 28-back card, Fugitoid and Mondo Gecko are on 31-back cards. Napoleon Bonafrog is on a 37-back card and Ray-Fillet is on a 39-back card. Each card has different, character-specific art and all blisters are firmly attached to cards. Each figure comes complete w/weapon/weapon/accessories pack. All cards remain unpunched. Wingnut has slight spot of minor denting to bottom of blister and Napoleon Bonafrog has 1.75" long crack at bottom of blister. Cards have just the slightest trace of handling and are Exc. to NM overall. Figures are NM/Mint as packaged. (H) \$100.00

**2682. "TEENAGE MUTANT NINJA TURTLES" GIANT SIZE FIGURE SET OF FOUR.** ©1989 Playmates. 5.5x12.15.5" boxes hold 13" turtle figures of Leonardo, Donatello, Michaelangelo and Raphael with weapon. Three boxes have moderate wear with some small tears or creases. VF: The Michaelangelo box has a small puncture on one side and one side has sections of litho missing across center and bottom. Still Good and displays Fine. Figures are unused and NM as issued. Large and impressive display pieces for the TMNT collector. (G) \$100.00



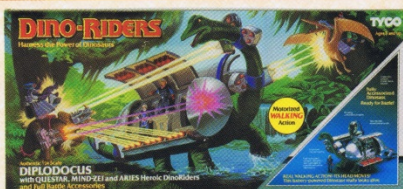
2682

**2683. "DINO-RIDERS - TYRANNOSAURUS REX" LARGE & IMPRESSIVE BOXED BATTERY-OPERATED DINOSAUR TOY.** "Dino-Riders" was a series of toys manufactured by Tyco Industries, Inc. and an accompanying cartoon series that focused on the battle between the heroic Valorians and the evil Rulons on prehistoric Earth. The Valorians befriended dinosaurs whilst the Rulons brain-washed them. Produced beginning in 1988, there were four series of Dino-Riders toys: Series 1 (released in 1988), Series 2 (released in 1989), Series 3 and Ice Age (both released in 1990). The larger toys in the line had motorized walking action w/the dinosaur's head swaying from side to side (though the Tyrannosaurus Rex's head does not). The toys were acclaimed for their highly detailed bodies/color. Offered here is Tyrannosaurus Rex, the biggest dinosaur toy produced in the first series. Battery-operated, it walks forward and its fearsome jaws open and close. The toy comes w/figures of Krulos (the Rulon leader), Bitor and Cobrus as well as "Full Battle Accessories" that consists of armor and weapons that could be placed on the dinosaur, effectively turning it into a walking battle station. This toy was the highlight of the first series of toys. Toy comes in its original 14x22x10" deep box w/front flap that can be lifted to view contents. Box has been opened and shows moderate wear to one end w/glue repairs to 2.5" tear and larger pair of 7" tears. Original cellophane window has 4.5" and 6.5" splits. VG overall, but box retains its shape and front still display nicely. Contents appear complete and NM-Mint. (I) \$200.00



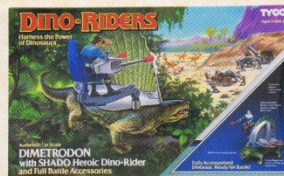
2683





2684

2684. "DINO-RIDERS - DIPLODOCUS" LARGE & IMPRESSIVE BOXED DINOSAUR TOY. From same series as previous item #2683. Offered here is Diplodocus, the second biggest dinosaur toy produced for the heroic Valorians. Battery-operated, it walks forward and its head and neck sway back and forth. The toy comes w/figures of Questar (the Valorian leader) Mind-Zei and Aries as well as "Full Battle Accessories" that consists of armor and weapons that could be placed on the dinosaur, effectively turning it into a walking battle station. This toy was the one of the highlights of the first series of toys. 1988. Toy comes sealed in its original 10x22x8" deep box w/front flap that can be lifted to view contents. Box has tiny traces of corner tip wear and lt. aging, and original cellophane window has 4.5" and 4.75" splits. VF/Exc. Contents appear complete and NM-Mint. (H) \$100.00



2685

2685. "DINO-RIDERS - DIMETRODON" BOXED DINOSAUR TOY. See previous item #2683. Offered here is Dimetrodon, from the second series of "Dino-Riders" toys. 1989. The toy comes w/figure of Shado as well as "Full Battle Accessories" that consists of armor and weapons that could be placed on the dinosaur. Comes w/mini comic book. Toy comes sealed in its original 7x11.5x3" deep box w/front flap that can be lifted to view contents. Box has some lt. corner tip wear w/one back corner having moderate creases. Front displays VF w/contents Mint as sealed. (G) \$100.00



2686



2686. "MAXX FX" FREDDY KRUEGER PROTOTYPE ACTION FIGURE & BOXED PRODUCTION SET. The MAXx FX action figure line was a proposed series of fully articulated base figures, capable of assuming a multitude of fantastic identities through special snap-on make-up appliances and costumes which would change MAXx's appearance as well as his size from character to character. The concept was developed by famed toy creator, Mel Birnkrant. The toy's storyline depicted MAXx as a sort of superhero whose disguises enabled him to take on both the appearance and abilities of the character that each make-up represented. For the original presentation, Birnkrant created prototype figures for MAXx FX himself, as well as a Werewolf, Jason Voorhees, Mummy, Freddy Krueger, Swamp Creature, Caveman and Dr. MAD FX's robot henchman, Ultra FX. The character heads/body appliances were created using Super Sculpy while the bodies were adapted from GI Joe figures w/new heads (also made of Super Sculpy). A jacket borrowed from a Ken doll became MAXx's Hollywood wardrobe while the most of the other outfits/costumes were made by Birnkrant, while Freddy Krueger's striped sweater was knitted in England by Birnkrant's mother-in-law. Other clothing was adapted from GI Joes and Ken dolls. Liquitex acrylics and bits and pieces of fake fur provided the final touches. In 1989, a deal was struck w/Matchbox Toys, w/the initial proposed line assortment consisting of Freddy Krueger, Frankenstein's Monster, Dracula, The Mummy, a Werewolf, The Creature From The Black Lagoon and the H.R. Giger-designed Alien from the 1979 sci-fi film. The line was to be produced using an actual 9" tall Mego figure (of which a large quantity had been found in a warehouse). Birnkrant was commissioned to create additional figures - Frankenstein, Dracula and Geiger's Alien - to fit the smaller scale. These prototypes were produced by the Matchbox design department to adapt Birnkrant's original 11" scale Super Sculpy versions to the 9" production plastic bodies w/all of the costume parts in hand-cast resin w/some having additional hair. Each head and snap-on appliance was made by hand and hand-painted. These prototypes represent the finalized form, in which the action figures were to actually appear in production. The initial presentation was pared down to Frankenstein, a re-designed Dracula, Alien and Freddy Krueger, w/the other figures to follow later. Freddy was the first and only figure to be released. When the line was purchased by Matchbox, those in the company were unfamiliar w/both Freddy Krueger and Jason Voorhees. This resulted in their prototypes being returned to Birnkrant. When the line was previewed to buyers, many remarked on Freddy's popularity and asked why he was not included. In response, Matchbox asked for Freddy back and made him the line's lead figure. They seized on Freddy's popularity and produced as talking Freddy Krueger doll. This doll met w/outrage from parents and activists and was discontinued. As it featured a similar appearance as the MAXx FX figure, Matchbox and toy buyer's alike were unable to distinguish the difference between the doll and MAXx FX, the MAXx FX figure was pulled from shelves as well, effectively ending the short-lived toyline, w/the Freddy Krueger figure being the only one released for this promising toy line, a line that has been referred to as "Finest Action Figure Line That Never Was." Offered here is the original prototype figure for the Freddy Krueger figure. It was constructed on a 9.5" tall Mego body w/sculpted MAXx FX head, hands, boots, two-piece mask and separate hat. Also comes w/a screen-printed striped sweater as opposed to the knit sweater that was issued w/the actual figure. Figure also comes w/street clothes outfit for MAXx FX and extra pair of vinyl shoes. Unfortunately, Freddy's iconic bladed glove is not included, but the figure does come w/an extra left hand, which can be placed on the figure's right hand for display. Base head shows a few small spots of paint wear and tiny tab on side of Freddy mask at neck is broken off, but this is not visible when in place as hidden by sweater collar. When full figure accessories are in place, figure displays Exc. Comes w/complete boxed example of the final production figure in its 14x14.25x2-3/8" deep window display box. The prototype figure offered in this lot is the actual photo example used on the back of the box. Box shows lt. handling wear and original store price sticker remains on side panel. VF w/contents Mint as factory sealed. From the Mel Birnkrant Collection and comes with COA. (L) \$1,000.00